



GMT MONTHLY MEMBERSHIP PROGRESS REPORT

Results as of: 5/31/2018

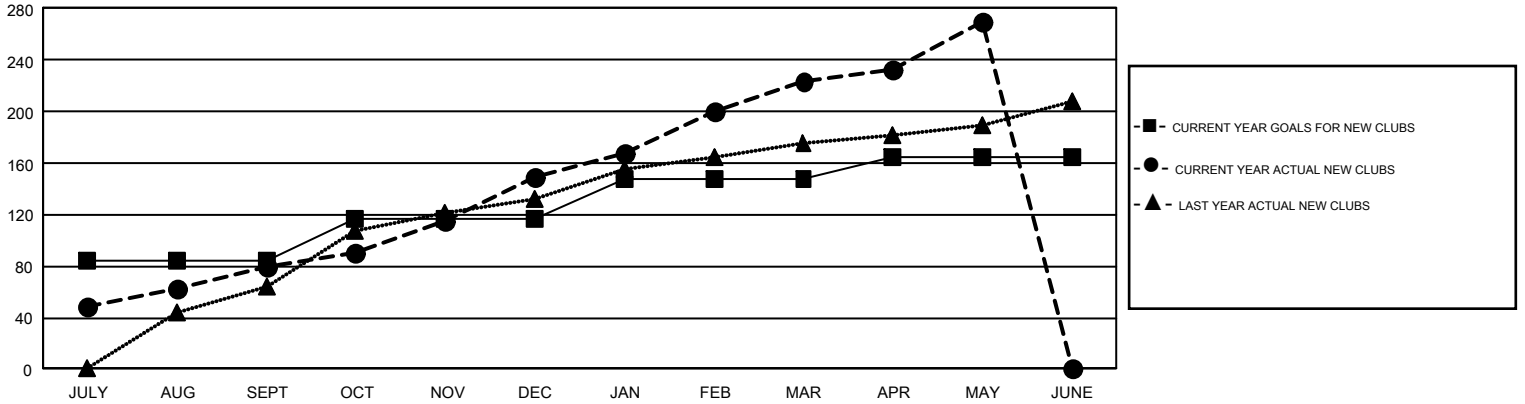
GMT Constitutional Area 6, Group B

GMT: KHAGENDRA SITAULA

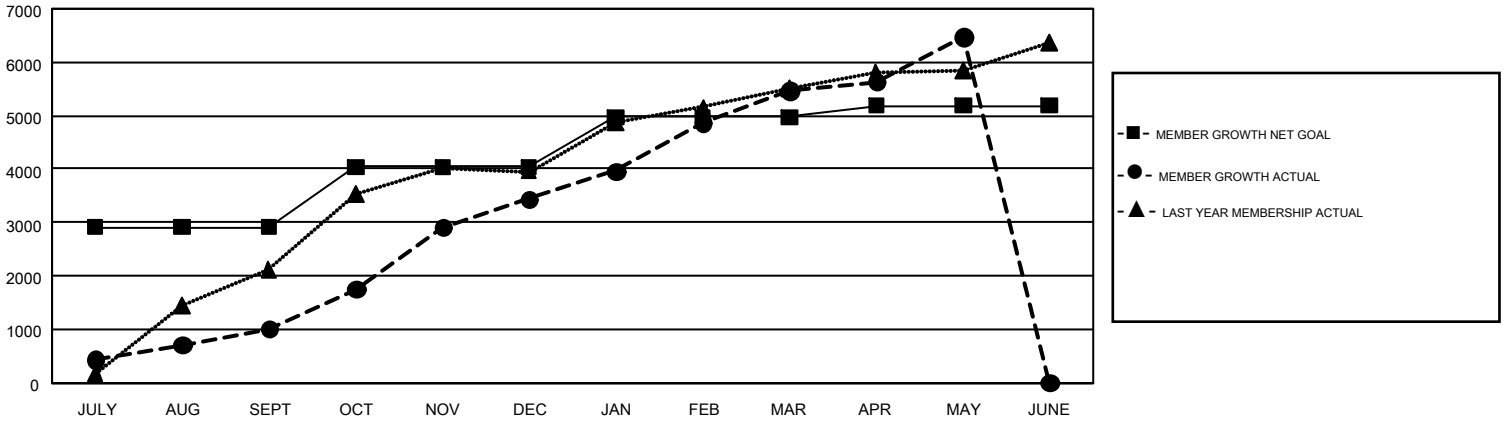
REPORT DOES NOT INCLUDE CLUBS IN UNDISTRICTED AREAS.

Clubs				Members			
RESULTS FOR 2017-2018				RESULTS FOR 2017-2018			
QUARTER	NEW CLUB GOAL	NEW CLUBS	DROPPED CLUBS	QUARTER	MEMBER GROWTH NET GOAL	MEMBER GROWTH ACTUAL	DROPPED MEMBERS ACTUAL (including transfers)
JULY/AUG/SEPT	84	79	7	JULY/AUG/SEPT	2,915	2,730	1,604
OCT/NOV/DEC	32	70	12	OCT/NOV/DEC	1,126	3,935	1,305
JAN/FEB/MAR	31	74	2	JAN/FEB/MAR	935	2,866	788
APR/MAY/JUNE	18	47	4	APR/MAY/JUNE	209	1,971	906

GOALS AND ACTUAL NEW CLUBS CUMULATIVE



GOALS AND ACTUAL MEMBERS CUMULATIVE



DROPPED CLUBS: 25	905 CLUBS OF 1,406 ADDED 1 OR MORE NEW MEMBERS	<u>GENDER DISTRIBUTION</u> MALE 29,414 (76.57%) FEMALE 8,999 (23.43%)
<u>DROPPED MEMBERS</u> DECEASED 30 CLUB CANCELLED 399 OTHER 4,174 <hr/> TOTAL 4,603	CLICK HERE FOR CUMULATIVE MEMBERSHIP DATA	TOTAL FAMILY UNIT MEMBERS 18,980 FAMILY MEMBERS PAYING HALF DUES 11,883